

# ESCT-TA Series Mini Split Core Current Transformer

## Datasheet

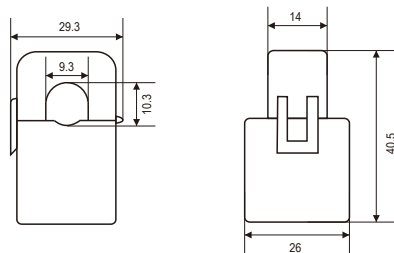
- Split Core, easy installation
- Primary input 5A~630A
- Secondary output 333mV/100mV / 100mA/40mA
- Safe operation
- Standard IEC60044-1, EN60044-1, VDE0414-44-1, GB1208-2006



Specification	
Frequency	50-60Hz
Rated current	5A to 630A loads
Rated output	100mA / 40mA (AC)
Accuracy	Class 0.5 or 1 from 20% to 120% of rated current
Phase angle	less than 2 degrees at 50% of rated current
Insulation voltage	600V AC
Maximum primary voltage	5000V AC (Insulated Conductor)
Dielectric strength	2.5KV / 1mA / 1min
Operating temperature	-12°C to +75°C.
Operating humidity	<85%
Case material	PC / UL94-V0
Bobbin	PBT
Core	Permalloy
Internal structure	Epoxy
Leads	UL 1015, Twisted Pair, 22AWG

### ESCT-TA10

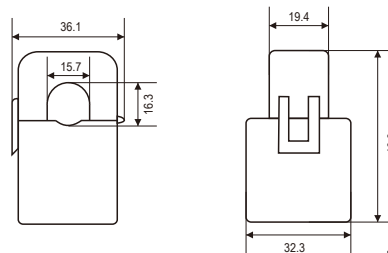
Model	Rated Amps	Output	Accuracy
ESCT-TA10	5	100mA/40mA	0.5/1
ESCT-TA10	10	100mA/40mA	0.5/1
ESCT-TA10	20	100mA/40mA	0.5/1
ESCT-TA10	50	100mA/40mA	0.5/1
ESCT-TA10	75	100mA/40mA	0.5/1



ESCT-TA10

### ESCT-TA16

Model	Rated Amps	Output	Accuracy
ESCT-TA16	10	100mA/40mA	0.5/1
ESCT-TA16	50	100mA/40mA	0.5/1
ESCT-TA16	100	100mA/40mA	0.5/1
ESCT-TA16	120	100mA/40mA	0.5/1



ESCT-TA16

# ESCT-TA Series Mini Split Core Current Transformer

## Datasheet

- Split Core, easy installation
- Primary input 5A~630A
- Secondary output 333mV/100mV / 100mA/40mA
- Safe operation
- Standard IEC60044-1, EN60044-1, VDE0414-44-1, GB1208-2006



### Specification

Frequency	50-60Hz
Rated current	5A to 630A loads
Rated output	100mA / 40mA (AC)
Accuracy	Class 0.5 or 1 from 20% to 120% of rated current
Phase angle	less than 2 degrees at 50% of rated current
Insulation voltage	600V AC
Maximum primary voltage	5000V AC (Insulated Conductor)
Dielectric strength	2.5KV / 1mA / 1min
Operating temperature	-12°C to +75°C.
Operating humidity	<85%
Case material	PC / UL94-V0
Bobbin	PBT
Core	Permalloy
Internal structure	Epoxy
Leads	UL 1015, Twisted Pair, 22AWG

### ESCT-TA24

Model	Rated Amps	Output	Accuracy
ESCT-TA24	10	100mA/40mA	0.5/1
ESCT-TA24	50	100mA/40mA	0.5/1
ESCT-TA24	100	100mA/40mA	0.5/1
ESCT-TA24	250	100mA/40mA	0.5/1
ESCT-TA24	400	100mA/40mA	0.5/1

### ESCT-TA36

Model	Amps	Output	Accurac
ESCT-TA36	20	100mA/40mA	0.5/1
ESCT-TA36	100	100mA/40mA	0.5/1
ESCT-TA36	250	100mA/40mA	0.5/1
ESCT-TA36	400	100mA/40mA	0.5/1
ESCT-TA36	600	40mA/100mA	0.5/1
ESCT-TA36	630	100mA	0.5/1

